

eastown lofts

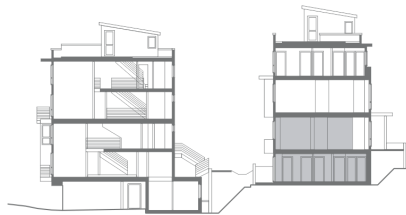
2615 A | 2 bedroom | 1.5

INTERIOR

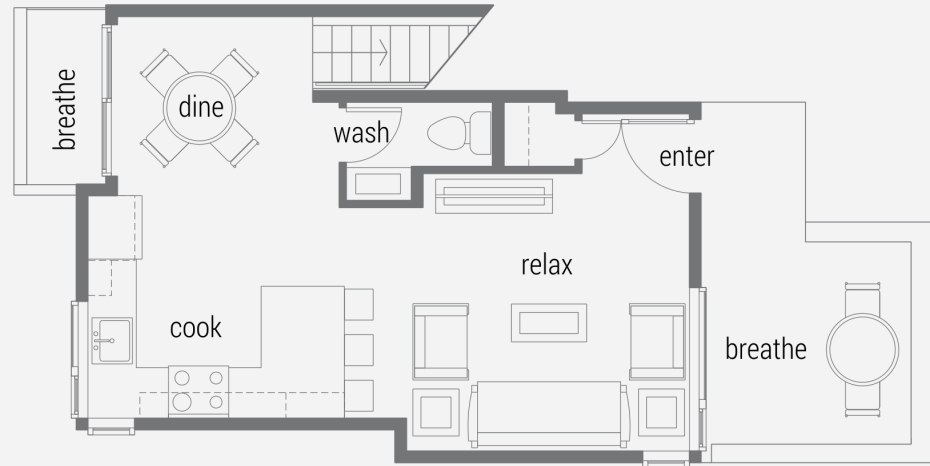
918 SF

FEATURES

- Private outdoor space at each unit
- Large windows
- Centrally located in Eastlake Neighborhood
- Bike + car parking available
- Landscaped courtyard



east building, lower, south



Main



Lower

RUDD[™]
home done well

The Rudd Company
easttownlofts.com
rudddevelopment.com

The Seller reserves the right to modify floor plans, elevations, plans, maps, specifications, materials, features, colors and prices without notice. All images are artist's conceptions and are not to scale. Square footage and dimensions are approximate and subject to change.

eastown lofts

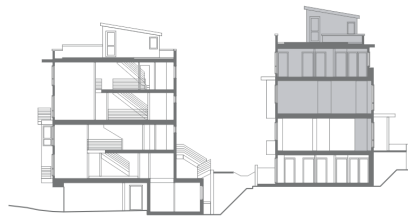
2615 B | 2 bedroom | 1.5

INTERIOR

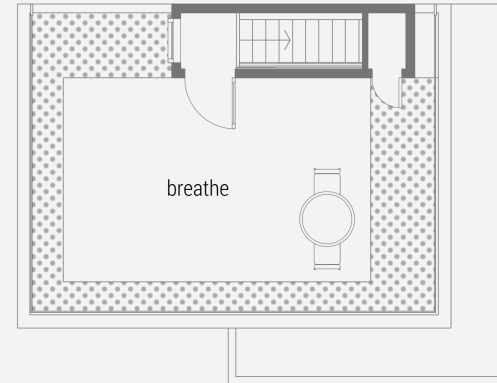
1127 SF

FEATURES

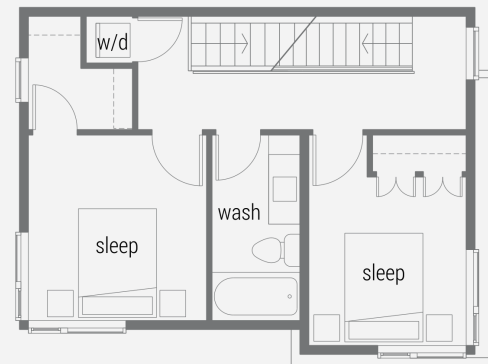
- Private outdoor space at each unit
- Large windows
- Centrally located in Eastlake Neighborhood
- Bike + car parking available
- Landscaped courtyard



east building, upper, south



Roof deck



Upper



Main

The Seller reserves the right to modify floor plans, elevations, plans, maps, specifications, materials, features, colors and prices without notice. All images are artist's conceptions and are not to scale. Square footage and dimensions are approximate and subject to change.

RUDD[™]
home done well

The Rudd Company
easttownlofts.com
rudddevelopment.com

eastown lofts

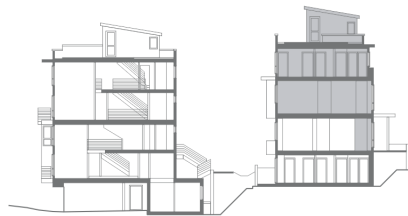
2615 C | 2 bedroom | 1.5

INTERIOR

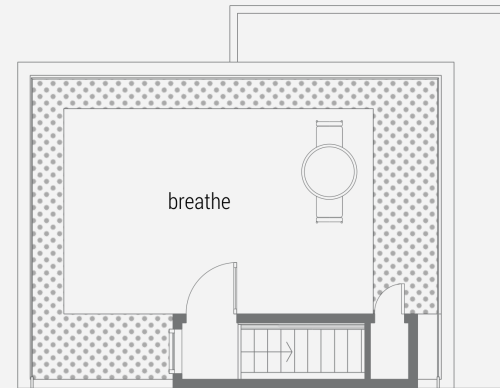
1127 SF

FEATURES

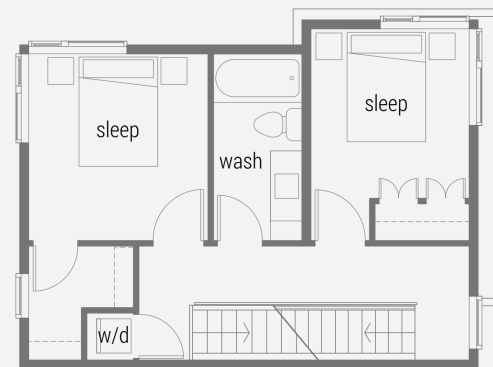
- Private outdoor space at each unit
- Large windows
- Centrally located in Eastlake Neighborhood
- Bike + car parking available
- Landscaped courtyard



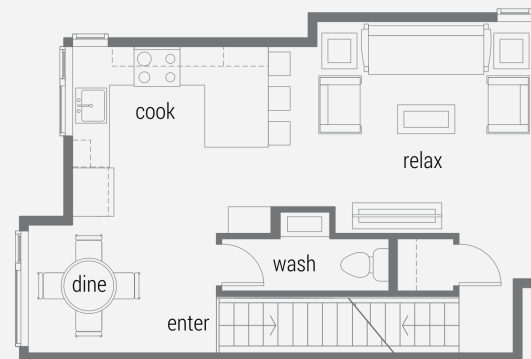
east building, upper, north



Roof deck



Upper



Main

RUDD[™]
home done well

The Rudd Company
easttownlofts.com
rudddevelopment.com

The Seller reserves the right to modify floor plans, elevations, plans, maps, specifications, materials, features, colors and prices without notice. All images are artist's conceptions and are not to scale. Square footage and dimensions are approximate and subject to change.

eastown lofts

2615 D | 2 bedroom | 1.5

INTERIOR

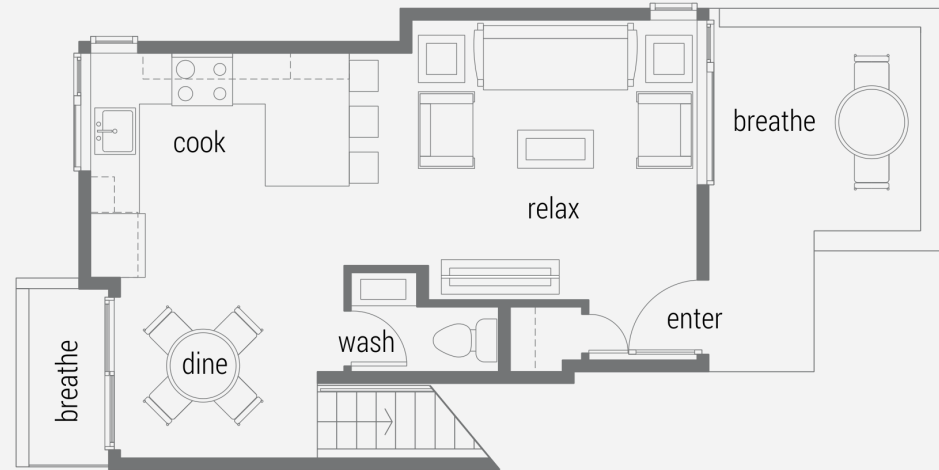
913 SF

FEATURES

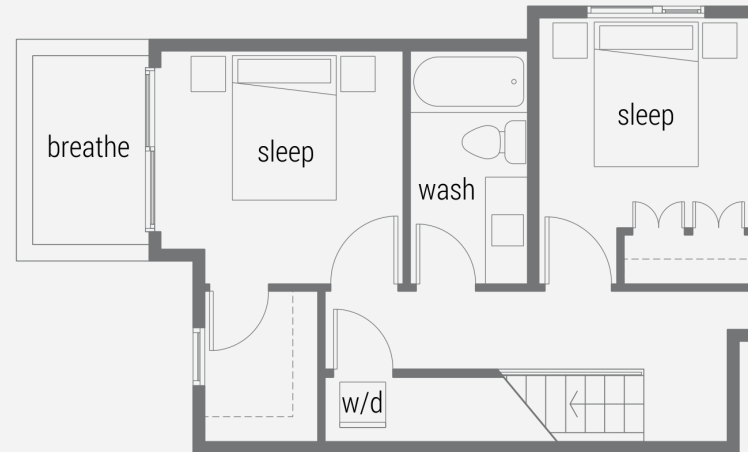
- Private outdoor space at each unit
- Large windows
- Centrally located in Eastlake Neighborhood
- Bike + car parking available
- Landscaped courtyard



east building, lower, north



Main



Lower

RUDD[™]
home done well

The Rudd Company
easttownlofts.com
rudddevelopment.com

The Seller reserves the right to modify floor plans, elevations, plans, maps, specifications, materials, features, colors and prices without notice. All images are artist's conceptions and are not to scale. Square footage and dimensions are approximate and subject to change.

eastown lofts

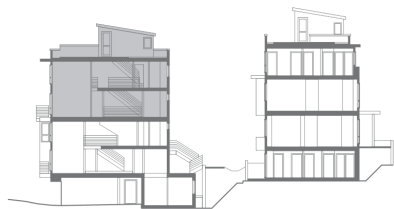
2617 E | 1 bed loft | 1.5 bath

INTERIOR

864 SF

FEATURES

- Private outdoor space at each unit
- Large windows
- Centrally located in Eastlake Neighborhood
- Bike + car parking available
- Landscaped courtyard



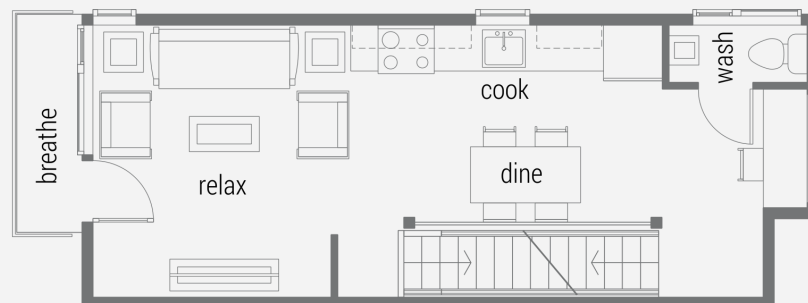
west building, upper, north unit



Roof deck



Loft



Main

RUDD[™]
home done well

The Rudd Company
eastownlofts.com
rudddevelopment.com

The Seller reserves the right to modify floor plans, elevations, plans, maps, specifications, materials, features, colors and prices without notice. All images are artist's conceptions and are not to scale. Square footage and dimensions are approximate and subject to change.

eastown lofts

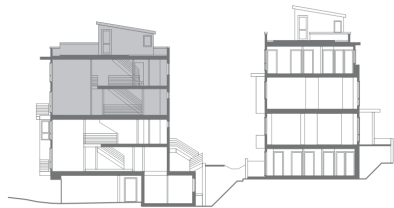
2617 B | 1 bed loft | 1.5 bath

INTERIOR

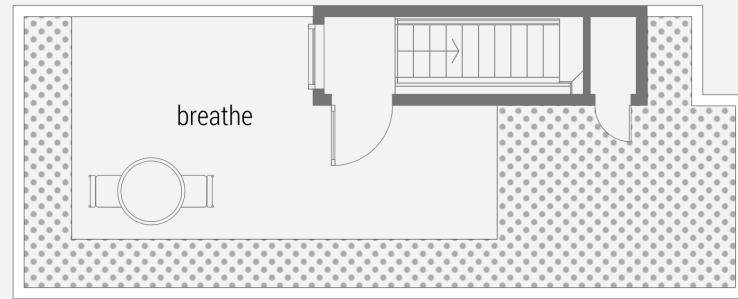
864 SF

FEATURES

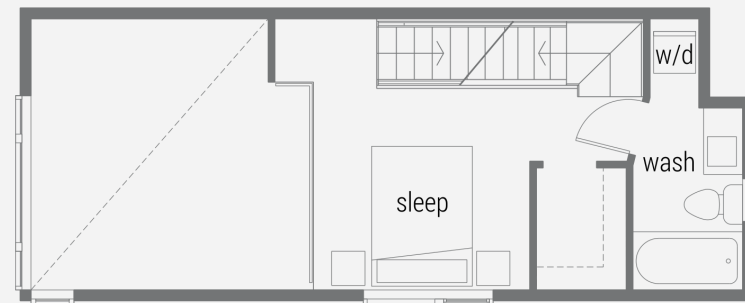
- Private outdoor space at each unit
- Large windows
- Centrally located in Eastlake Neighborhood
- Bike + car parking available
- Landscaped courtyard



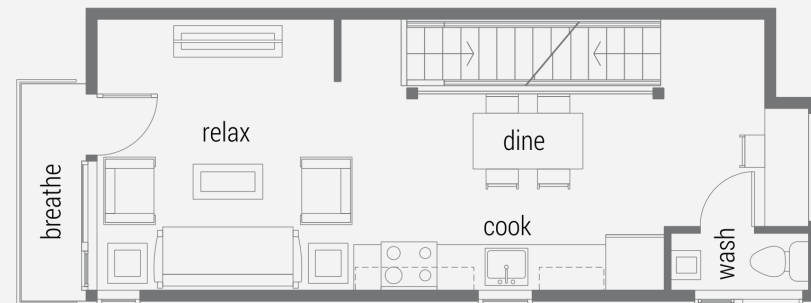
west building, upper, south unit



Roof deck



Loft



Main

RUDD[™]
home done well

The Rudd Company
easttownlofts.com
rudddevelopment.com

The Seller reserves the right to modify floor plans, elevations, plans, maps, specifications, materials, features, colors and prices without notice. All images are artist's conceptions and are not to scale. Square footage and dimensions are approximate and subject to change.

eastown lofts

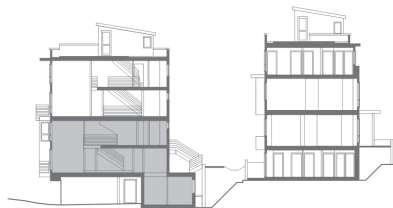
2617 F | 1 bed loft + den | 1.5

INTERIOR

885 SF

FEATURES

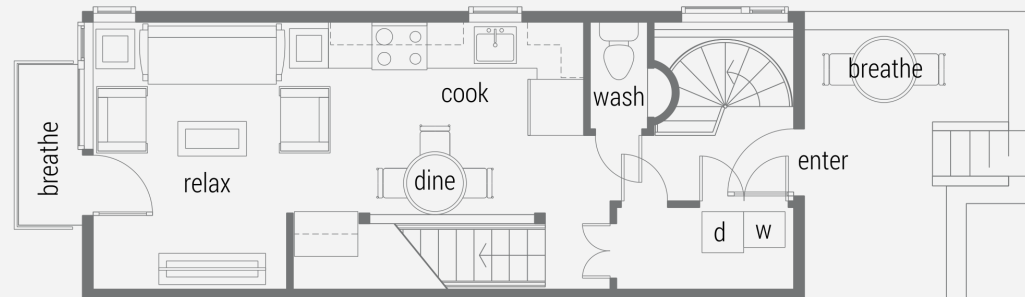
- Private outdoor space at each unit
- Large windows
- Centrally located in Eastlake Neighborhood
- Bike + car parking available
- Landscaped courtyard



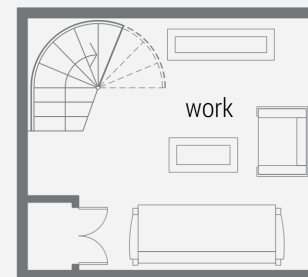
west building, lower, north unit



Loft



Main



Lower

RUDD[™]
home done well

The Rudd Company
eastownlofts.com
rudddevelopment.com

The Seller reserves the right to modify floor plans, elevations, plans, maps, specifications, materials, features, colors and prices without notice. All images are artist's conceptions and are not to scale. Square footage and dimensions are approximate and subject to change.

eastown lofts

2617 A | 1 bed loft + den | 1.5

INTERIOR

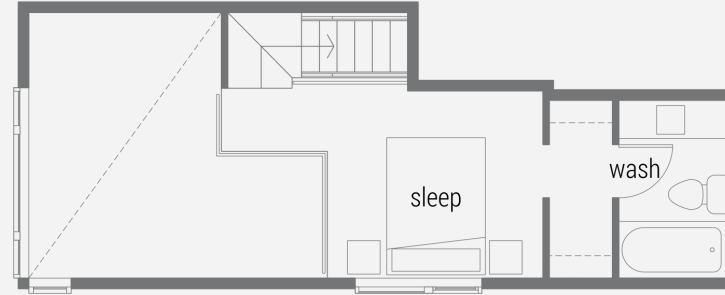
891 SF

FEATURES

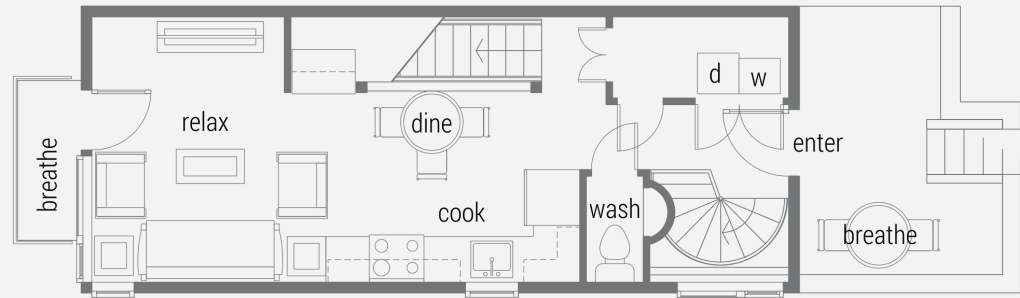
- Private outdoor space at each unit
- Large windows
- Centrally located in Eastlake Neighborhood
- Bike + car parking available
- Landscaped courtyard



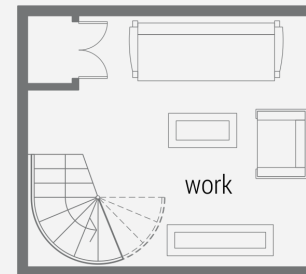
west building, lower, south unit



Loft



Main



Lower

RUDD[™]
home done well

The Rudd Company
easttownlofts.com
rudddevelopment.com

The Seller reserves the right to modify floor plans, elevations, plans, maps, specifications, materials, features, colors and prices without notice. All images are artist's conceptions and are not to scale. Square footage and dimensions are approximate and subject to change.

eastown lofts

2617 D | 1 bed loft + den | 1.5

INTERIOR

913 SF

FEATURES

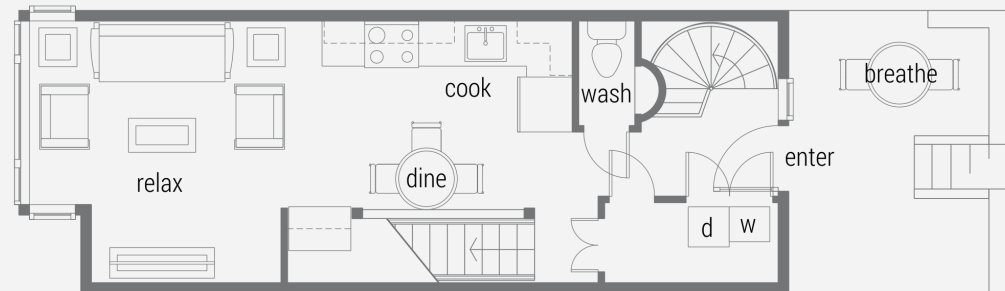
- Private outdoor space at each unit
- Large windows
- Centrally located in Eastlake Neighborhood
- Bike + car parking available
- Landscaped courtyard



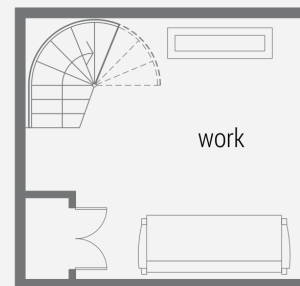
west building, lower, middle



Loft



Main



Lower

RUDD[™]
home done well

The Rudd Company
easttownlofts.com
rudddevelopment.com

The Seller reserves the right to modify floor plans, elevations, plans, maps, specifications, materials, features, colors and prices without notice. All images are artist's conceptions and are not to scale. Square footage and dimensions are approximate and subject to change.

eastown lofts

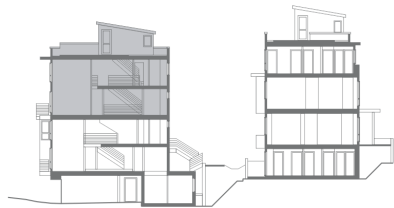
2617 C | 1 bed loft | 1.5 bath

INTERIOR

862 SF

FEATURES

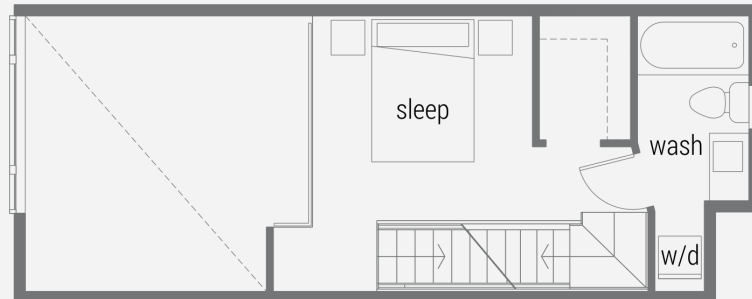
- Private outdoor space at each unit
- Large windows
- Centrally located in Eastlake Neighborhood
- Bike + car parking available
- Landscaped courtyard



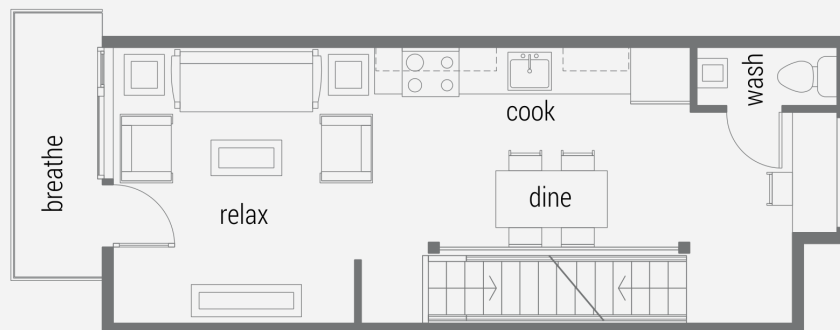
west building, upper, middle



Roof deck



Loft



Main

RUDD[™]
home done well

The Rudd Company
eastownlofts.com
rudddevelopment.com

The Seller reserves the right to modify floor plans, elevations, plans, maps, specifications, materials, features, colors and prices without notice. All images are artist's conceptions and are not to scale. Square footage and dimensions are approximate and subject to change.